

Automate Your Active Directory

elevateAD[®]



Test drive available on
Microsoft AppSource



Identity & Access Management Automation



- create AD or AAD accounts
- assign security profiles
- provision software licenses
- provide enterprise system access
- comply with regulations (e.g. GDPR, SOX, CCPA)

Microsoft
Partner



2019 Partner of the Year Finalist
Dynamics 365 for Talent Award

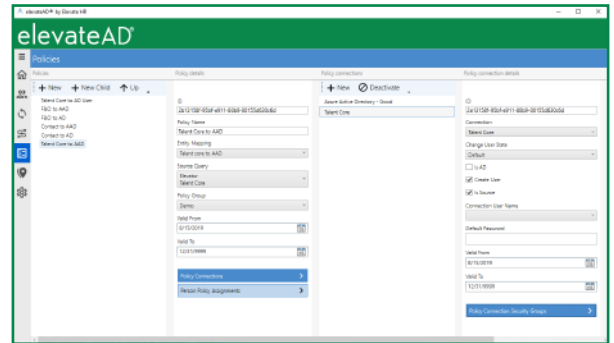
Gold Enterprise Resource Planning

www.elevate-hr.com
sales@elevate-hr.com
+1 877 968-4440

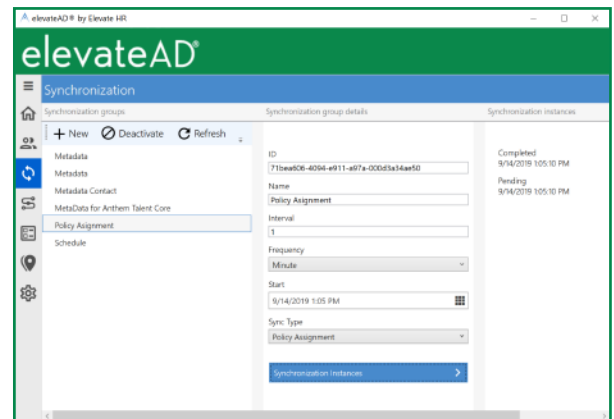
elevateHR[®]
Taking Talent to the Top

Features

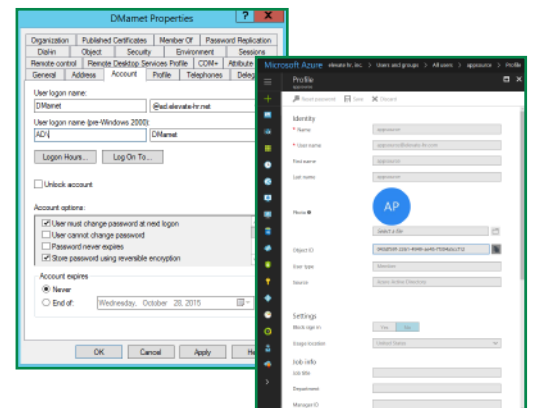
- Auto-create AD or AAD accounts for Employees, Vendors, Customers, Contacts—any records for people who need secure network access
- Automate access to all systems, enterprise-wide, at time of onboarding
- Automate deactivation from all systems, enterprise-wide, at time of offboarding
- Keep network and application security automatically up to date based on changes in employee or contact information in Dynamics 365
- Automatically provision and deprovision Microsoft licences, for example, to O365, Dynamics 365, etc.
- Ensure you always have the current reporting structure in AD by synchronizing your Dynamics 365 position-based hierarchy
- Configure 2-way synchronization between Dynamics 365 and either Azure or on-prem Active Directory for bidirectional flow of information
- Set up for multiple domains and databases, such as the Common Data Service, or SQL (for high-volume environments)
- Enable AD account options such as Kerberos DES encryption types, smart card interactive logins, sensitive accounts, etc.
- Set up rule-based usernames for D365 and AD (e.g. [First Initial].[Last Name])
- Design policy rules to fine tune the management of AD accounts, including OU groupings and required actions



Establish rules for AD account auto-creation/deactivation and security group policies based on indicative data in Dynamics 365 (for Sales, Marketing Service, Finance, Operations, Commerce, and HR)



Schedule and monitor synchronizations of policies to Dynamics and Active Directory



Integrate to on-prem Active Directory as well as to Azure Active Directory

For more information about our products and services, visit www.elevate-hr.com

Email: sales@elevate-hr.com
 Phone: +1 973-917-3220
 +1 877-968-4440