

Active Directory Integration



Microsoft
Dynamics®
AX

Elevate[®]_{HR}

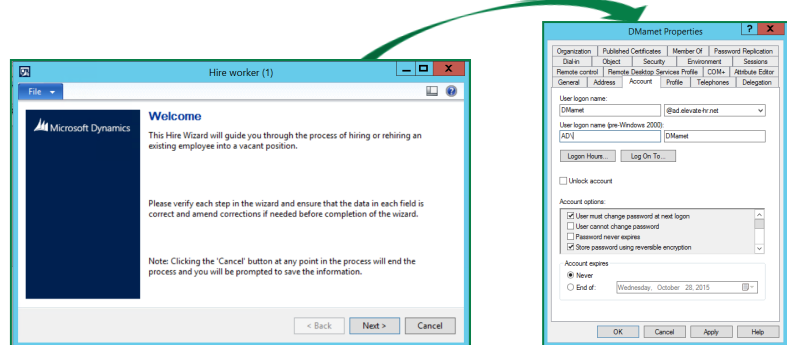
Active Directory Integration

- Leverage your investment in Microsoft Dynamics® AX and its Human Capital Management modules
- Improve the effectiveness of your Human Resources staff
- Increase the efficiency of your Human Resources operations and transaction processing
- Automate Human Resources Policies, Procedures, and Processes

Elevate HR® for AX integrates seamlessly with Microsoft Dynamics® AX to provide a complete Human Capital Management suite

The employee lifecycle extends well beyond the actions of “hire” and “retire.” You need to provide new employees with appropriate access to your company’s network, computer systems, and communications resources. Upon termination, you need to ensure that employees have their access disabled. Microsoft’s Active Directory (AD) manages system access for your entire organization; Elevate HR’s **Active Directory Integration** automates the process.

Configure status- and date-based parameters so that hiring a worker in Microsoft Dynamics AX triggers the creation and activation of their AD user account. Plus, automatically enable their AX security for both client and self-service access.



Microsoft Partner
Gold Enterprise Resource Planning



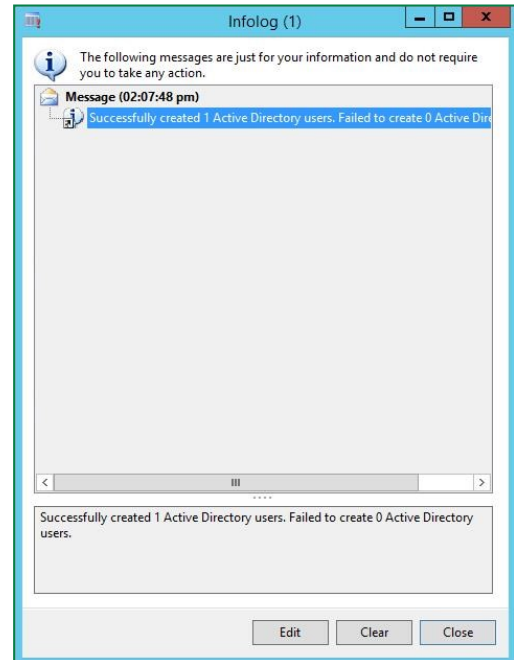
Elevate[®]_{HR}
Trailblazing Technology
www.elevate-hr.com

The reverse works, too. Create an employee in Active Directory, and watch as the AX worker record is created, populated, and ready for use in Projects, Purchasing, and routine tasks requiring signing limits and approvals. You choose what Human Resources means to your ERP—a multi-dimensional, fully-functional AX module, or the AD-controlled foundation of your organization.

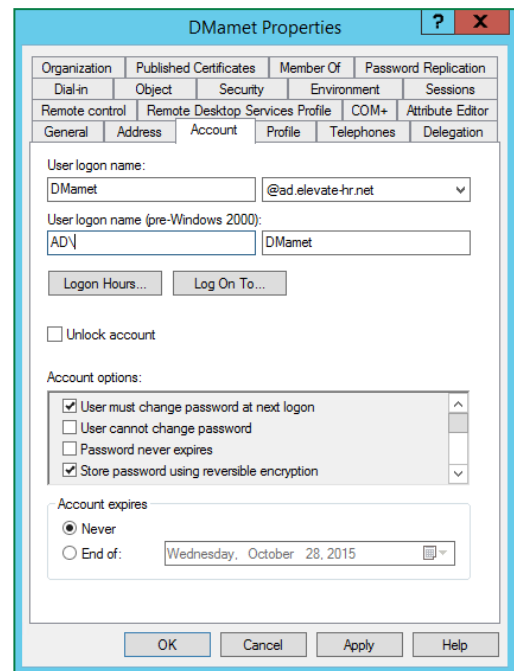
At the end of an employee’s time with your company, let Dynamics AX manage Active Directory for you. Terminate an employee in AX, and automatically deactivate Active Directory user accounts and access to all systems.

Features

- Automate access to (and deactivation from) all systems, enterprise-wide, through AX integration with Active Directory
- Utilize Elevate HR's exclusive Wizard technology to initiate the onboarding and termination process, OR use AD/AX Integration as a standalone tool
- Ensure you always have a current reports-to structure in AD by syncing the AX position-based hierarchy
- Configure 2-way synchronization between Dynamics AX and Active Directory for bidirectional flow of information
- Enable AD account options such as Kerberos DES encryption types, smart card interactive logins, sensitive accounts, etc.
- Set up rule-based usernames for AX and AD (e.g. [First Initial][.][Last Name])
- Trigger updates to Active Directory as an employee's status changes in AX, (e.g. from applicant to employed, on-leave, terminated, etc.)



Batch jobs create, update, and synchronize AX worker properties with Active Directory.



Initiate creation of the AX worker record directly from Active Directory.

For more information about our products and services, visit www.elevate-hr.com

Email: info@elevate-hr.com

Phone: +1 973-917-3230

+1 877-968-4440